



be.as Industry Solutions and international Rollouts

Topics

- **beas group at a glance**
- **SAP® Business One / be.as Strategy**
 - **Functional Scalability**
 - **Target Markets**
- **be.as Manufacturing and SCM (Supply Chain Management)**
 - **Industry Solutions**
- **be.as international Rollouts**
 - **Skills**
 - **International Scalability**
 - **References**

beas group and be.as Industry Solutions at a glance

beas group AG
Zurich
Switzerland

■ beas group AG

- > 25 years experience
- Software development for small and mid-sized manufacturing enterprises
- 2002 decision to develop be.as
- Specially designed for SAP® Business One
- 2009 Incorporation of beas Asia in Shanghai
- Global partner network in place

■ be.as Industry Solutions

- 2003 first live customer in Germany
- 2004 + 2009 SAP certification of be.as Manufacturing
- 2007 SAP and beas started to market industry solutions
- 2010 SAP certification of „Enabled by SAP Business One“
- > 400 customers in 34 countries
- Approx. 7'400 be.as user and 9'200 SAP® Business One user (March 2011)
- 15 supported language versions

Mission Statement

■ Our expertise

We have been the partner for SMEs for over 20 years. Since 2002, we have concentrated our efforts exclusively on the development and marketing of standard software based on SAP® Business One for discrete and process manufacturing as well as the parts supply industry.

■ Quality and scalability of our industry solutions

be.as modules are SAP-certified and targeted on small and medium-sized enterprises and the subsidiaries and branch offices of large organizations for world-wide use and integration with SAP R/3 and ERP 6.0.

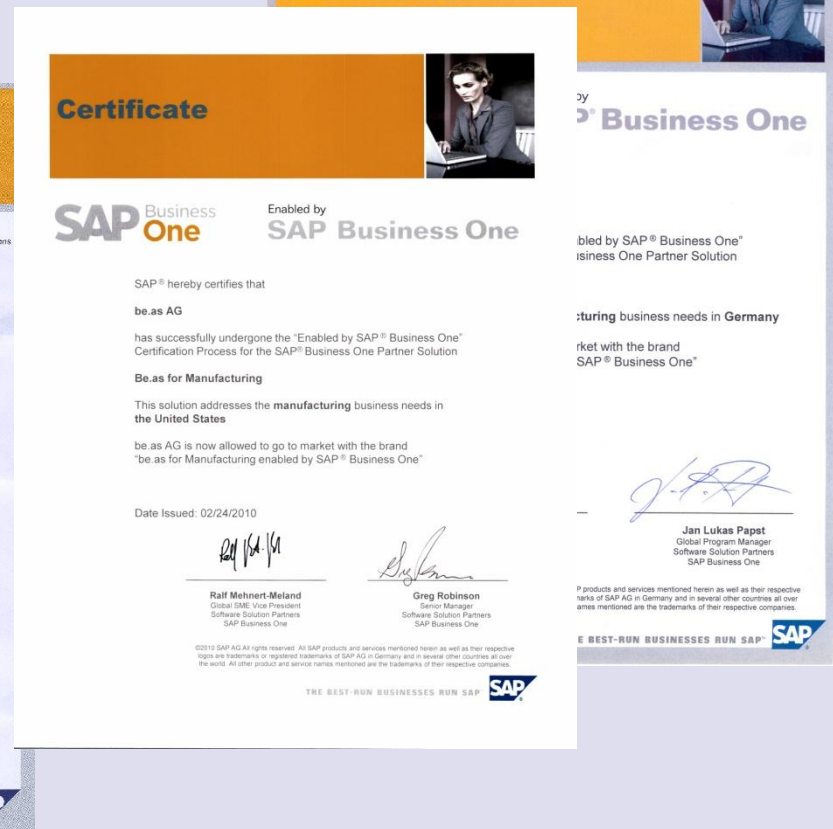
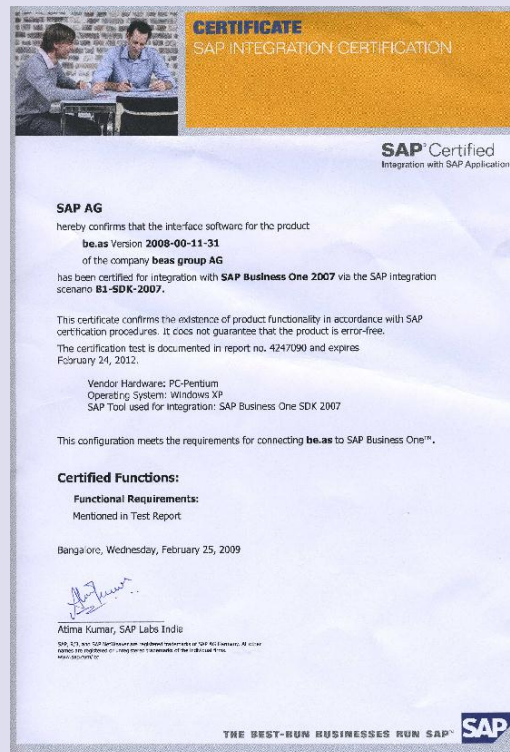
■ Support and maintenance for our customers

We support you in Germany and neighboring countries through direct activities (new branches, strategic projects) on the one hand and through competent and certified partners near you on the other hand. Our subsidiaries in cooperation with strategic partners also market and implement SAP® Business One / be.as in the other countries of Europe, North and Latin America and Asia / Pacific Region.

be.as Industry Solutions – certified and branded by SAP

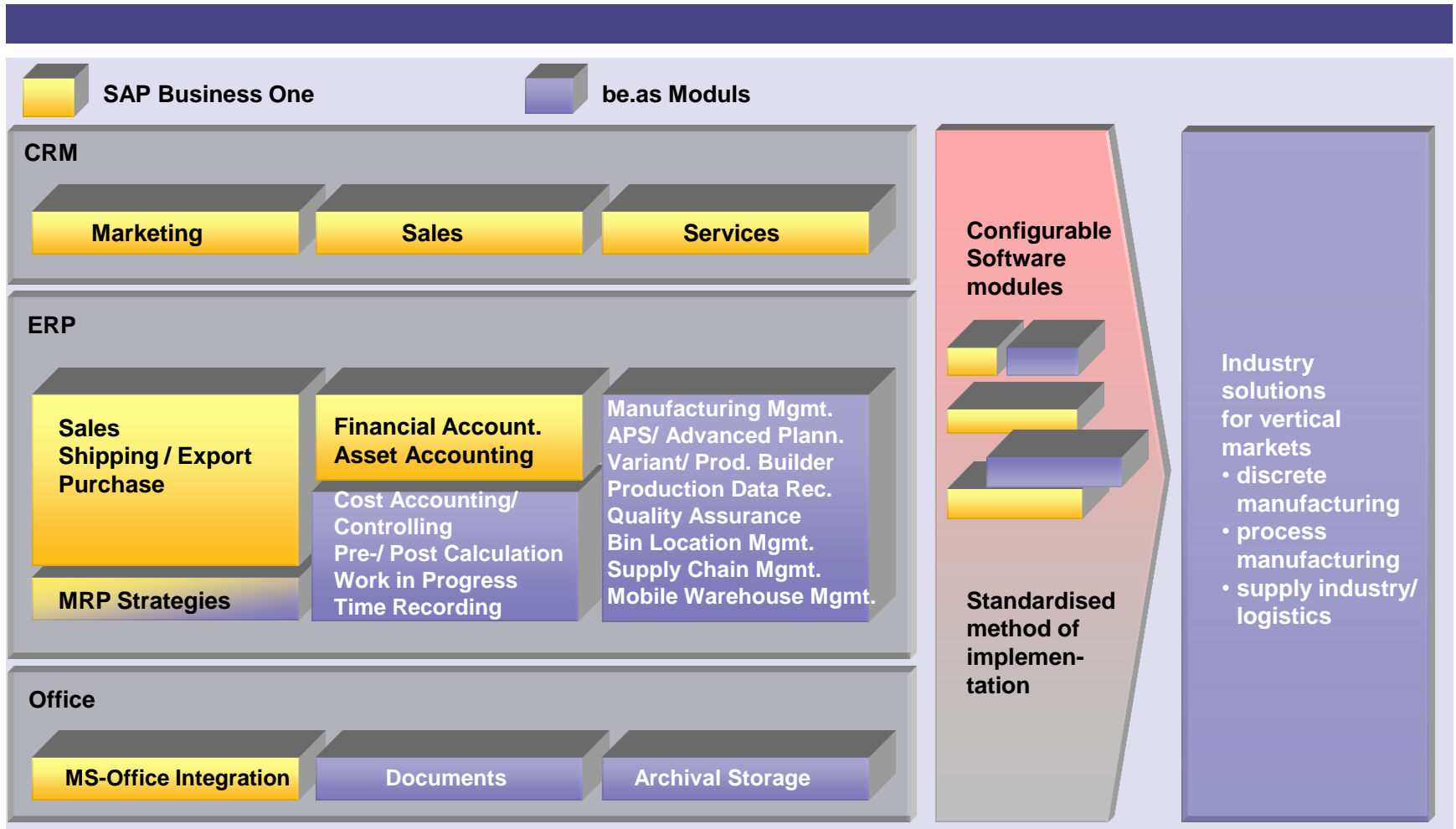
■ be.as industry solutions are certified according to the latest SAP terms of reference

- Development guidelines
- Technical integration
- Adjustment and coherence of the business processes
- Documentation of features and methods
- Marketing material
- Training material and data examples
- Internet portal for information, exchange of experiences and support all around be.as



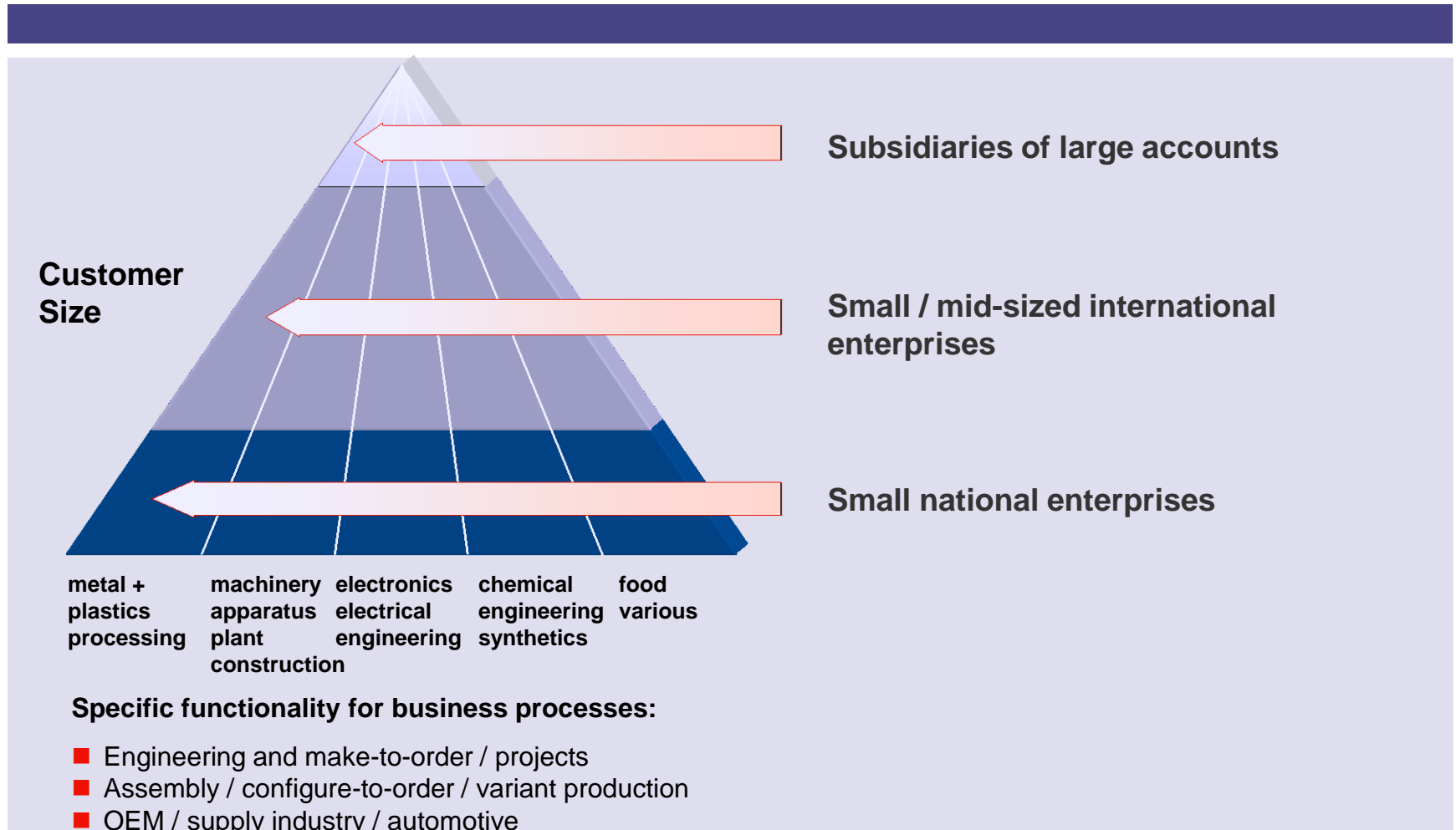
SAP® Business One / be.as - Strategy

– Functional Scalability



SAP® Business One / be.as - Strategy

– Target Markets



Proof of strategy be.as industry solutions

- new customers in 2010 in representative industries

- **Number of sold new be.as user licenses in 2010 > 1'200**
 - This relates to approx. 1'800 – 2'000 SAP Business One user
 - And 100 customers in a range from 2 – 80 user per site
- **A representative selection of some new customers and industries**
 - Kölleermann, engineer-to-order machinery, constructions, www.koellemann.de
 - Schlemmer Group, Automotive, www.schlemmer.com
 - Dana, Automotive, www.dana.com
 - Medivance, medical devices, www.medivance.com
 - Siegert GmbH, electronics, PC-boards www.siegert.de
 - Baojie Electric Motors Co., Ltd, electronical goods, www.cbmcn.com
 - Synplast AG, plastics engineering, www.synplast.ch
 - Amcor Flexibles, packaging industry, www.amcor.com
 - PR Service Graphique, packaging industry, www.prservicegraphique.com
 - Kollant, agricultural chemicals, insecticides, www.kollant.it
 - Vebi Instituto Biochimico, bio chemical products, www.vebi.it
 - Zeus Scientific, clinical diagnostics products, www.zeusscientific.com
 - Pharmintraco SA, chemical/microbiological engineering, www.pharmintraco.com

be.as Manufacturing for Machinery and Apparatus (1)

- **Machinery**
 - Engines, turbines, pumps
 - Construction and farm machinery
 - Machine tools
 - Robots and handling equipment
 - Special-purpose machines
 - Plants
- **Transportation equipment**
 - Equipment, parts for aircrafts, water crafts, rail and road vehicles



be.as Manufacturing for Machinery and Apparatus (2)

■ Electrical and electronic equipment

- Office equipment, machines
- Household equipment
- Consumer electronics
- Electrical equipment
- Powersupplies, equipment
- Communications equipment
- Electronic components



■ Instruments and related products

- Analytical, measuring and control instruments
- Laboratory equipment
- Medical devices
- Optical, photographic devices
- Timepieces, parts



be.as Manufacturing for Metal and Plastics Processing (1)

■ Service-oriented metal processing

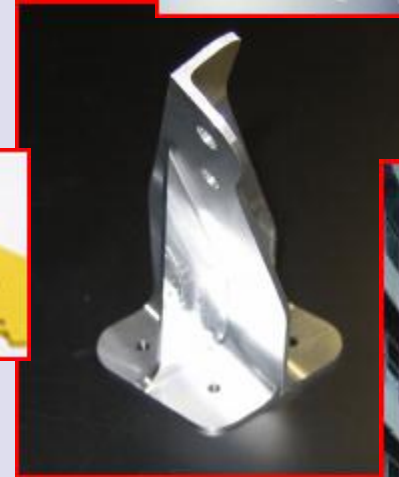
- Surface treatments
- Turning, punching, forming, etc.

■ Structural metal work like

- Hand tools, metal goods
- Cans, bins, vats
- Hydraulic and pneumatic elements
- Equipment for plumbing, heating, etc.

■ Metal construction

- Structures of welded sheet metal
- Metal constructions like stages, fencings, grids, ducts
- Steel/metal work
- Heavy gauge tanks, vessels, etc.



be.as Manufacturing for Metal and Plastics Processing (2)

- **Plastics and rubber processing**
 - Foils, plates, profiles, tubes
 - Gaskets, hoses, belts
 - Hydraulic and pneumatic elements, fittings
 - Bags, sacks, bins, bottles
- **Plastics and rubber equipment for**
 - ITC
 - Machinery and automotive
 - Laboratory, medical supplies
 - Plumbing, heating, construction
 - Household
 - Personal security
- **Plastics/rubber – metal assembl.**



be.as SCM (Supply Chain Management) for Supply Industry (1)

■ Automotive

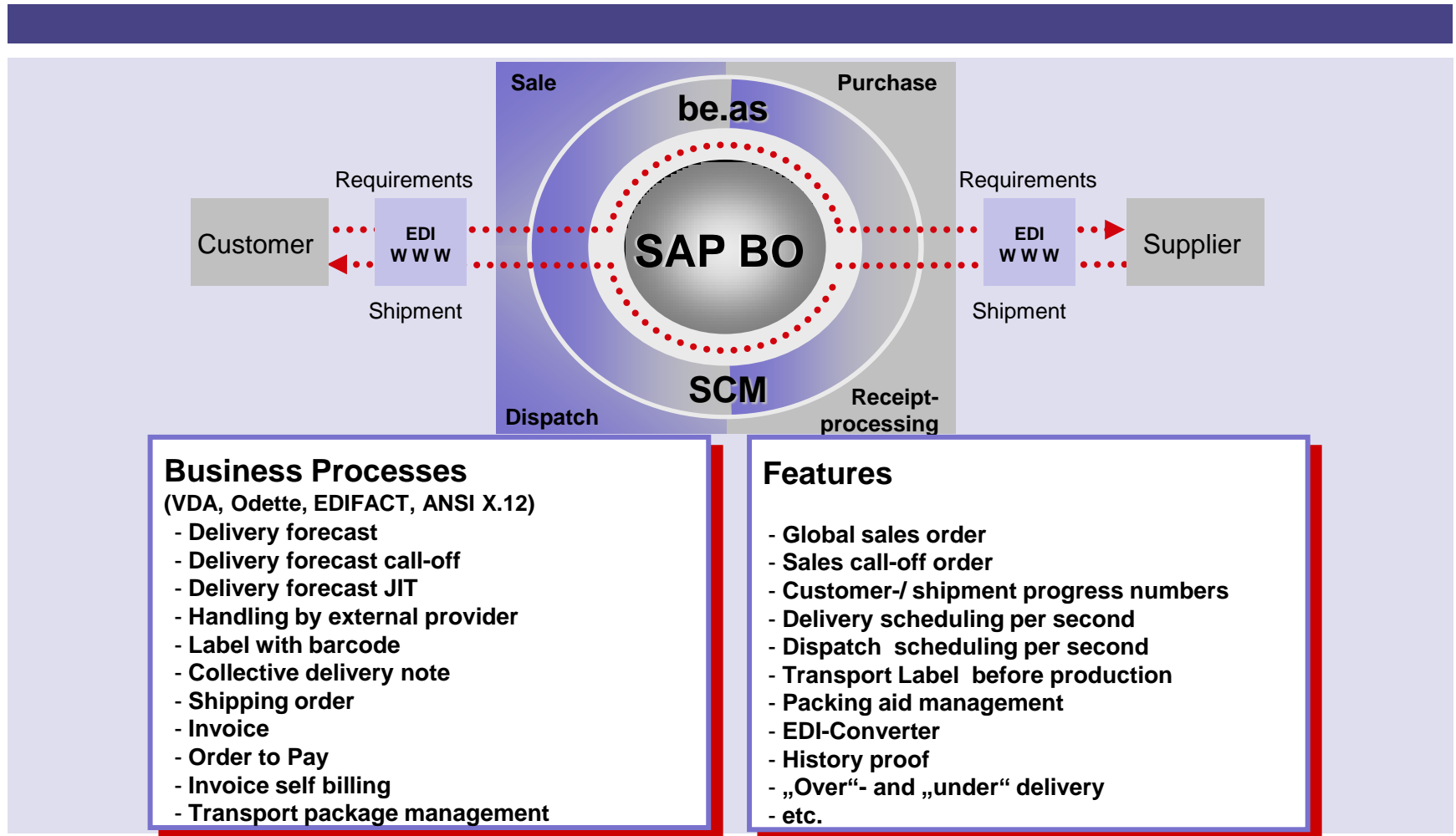
- Tier 1 enterprises with direct supplies to car manufacturer and purchase orders to tier 2 or 3 suppliers
- Tier 2 or 3 enterprises with supplies to upstream suppliers (e.g. tier 2 or 1)
- Industry-specific communication standards have to be used

■ Other enterprises as part of a supply chain

- Manufacturing enterprises
- Trading, distribution, logistic companies
- Communication only partly standardized or defined by key accounts individually



be.as SCM (Supply Chain Management) for Supply Industry (2)



be.as Manufacturing for Chemical Engineering

- Industrial organic chemicals
- Plastic materials, resins, fibers
- Soaps, cleaners
- Paints, lacquers
- Agricultural chemicals
- Various chemicals
- Oils, greases
- Papers, floor coverings



be.as Manufacturing for Packaging Industry

- **Fabrication of packaging material**
 - Paper and allied products like
 - Coated, printed papers
 - Bags, boxes
 - Plastic goods
 - Foils, bags, containers
 - Coated, printed
 - Steel / aluminium goods
 - Foils, blisters, cans, etc.
 - Wood products
- **Processing of packaging material**
 - Food
 - Pharmaceutical goods
 - Chemical goods
 - Cosmetics, etc.



be.as Manufacturing for Food

- Meat products
- Creamery products
- Dried, condensed, evaporated, frozen products
- Mill products
- Animal food
- Bakeries and candies
- Oils, fats
- Beverages



beas International Rollouts

- Skills

■ SAP® Business One

- Functionality
- Implementation in several industries
- Customization, additional developments, integration 3rd party software

■ be.as Manufacturing and Supply Chain Management

- Functionality
- Implementation in manufacturing companies
- be.as Supply Chain Management additionally in distribution / logistics
- Customization, additional developments, integration 3rd party software

■ R/3 and MySAP Integration

- Master, financial and order data
- Application of B1ISN
- Application of ibolt/magic

beas International Rollouts

- International Scalability

■ Project coordination / management

- By beas or one of its strategic partners

■ Template / Blueprint / Pilot

- Location to build a template or blueprint can be chosen by the customer
- No geographic limits to implement the pilot

■ Rollout

- Depending on the strategy of the customer
- Can be done by the rollout team of beas or beas' strategic partners
- In combination with the core team and/or local subsidiaries of the customer
- By the core team of the customer independently
- Involvement of experienced local SAP® Business One / be.as partners as needed

■ International / geographical coverage

- Europe, Americas, Asia / Pacific, Africa

beas International Rollouts

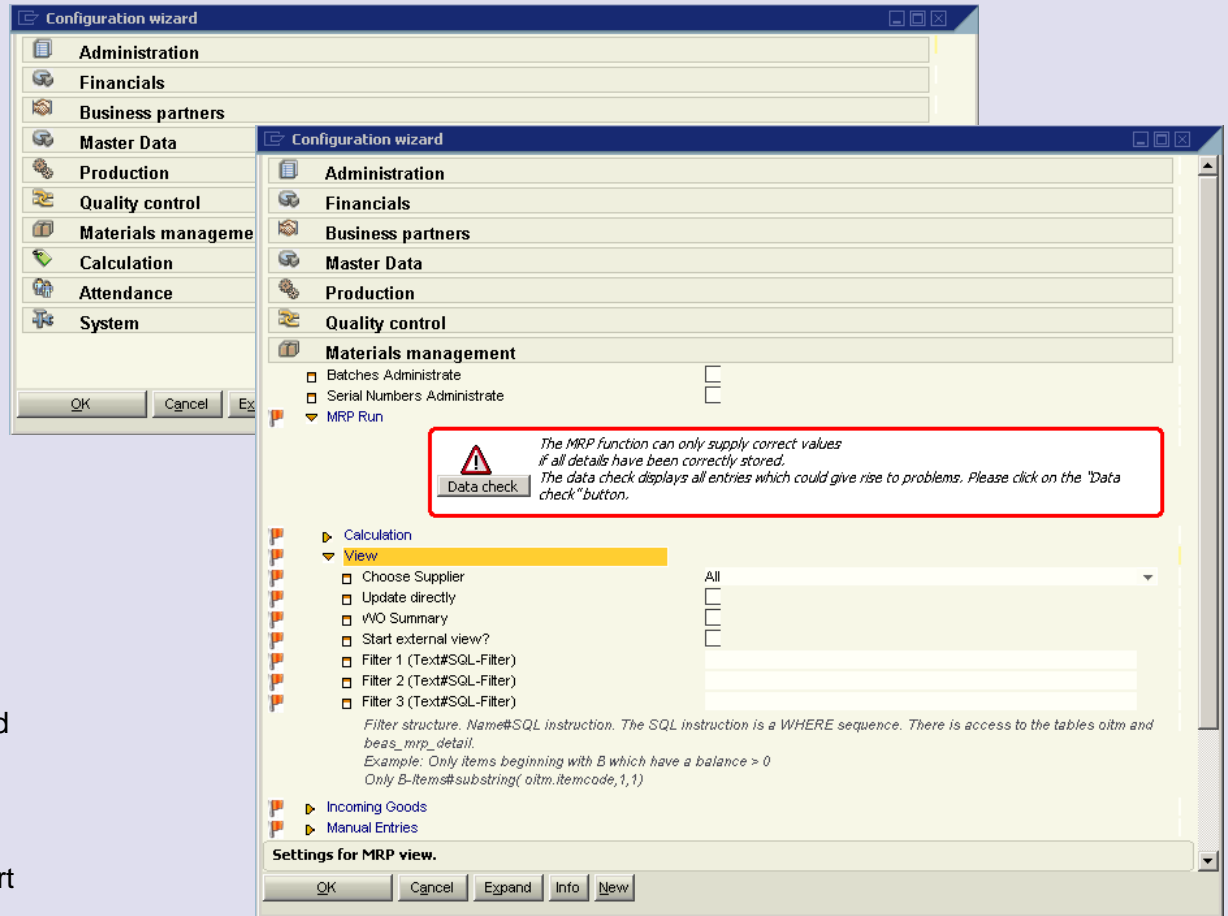
- be.as Configuration Wizard to create Templates / Pilots

Fast and comprehensive configuration of SAP Business One / be.as

- Centralized adjustment of all important parameters and settings
- Rule- and multi-level based configuration according to customer specific needs
- Administration of the settings like logging, export, using for support requests, etc.

Integrated checks of data integrity

- Important after data migration and during current data administration
- Inconsistencies will be detected immediately and can be edited directly
- Enables better self-control by the customer and saves support time and money





Workflow and Event Management

- free configurable in SAP® Business One / be.as

Event-based activities and workflows

- Events of SAP Business One and be.as
- Event scripts for more complex activities and workflows
- Can generate 1 message and up to 3 different decisions with follow-up actions

Catalogue with predefined events

- be.as provides a standard catalogue with predefined actions

Time Receipts

Document	18
Work order	
Position	10
vVO stat.	20
Barcode	
Person	1 James Bond
Date	05/10/09
Time from	00:00 To 00:00
Duration	1 Min
Quantity First Quality	1,00 Pcs
Scrap	0,00 Pcs
Resource	1600
	Sawing Machine 1
Cost Element	
Charge to Cost Centre	Centr_z General Center

Planned Qty 5,00 Pcs
Produced first quality Pcs
Produced scrap Pcs
Plan Time for Plan Quantit 132,000 Min.
Actual Time Min.
Personnel daily time 00:00

Information

Batch

Cancel Delete Scrap Part Receipt Complete

The minimum value is not reached- Maintenance sequence can not be

Activity

Activity	Other	Number	42
Type	General	BP Code	C50003
Subject		BP Name	ADA Technologies
Assigned To	manager	Contact Person	
<input type="checkbox"/> Personal		Telephone No.	

General

Remarks workorder logout 18/10/20: min-qty - can not close

Start Time 05/10/09 20:55 Priority Normal

End Time 05/10/09 21:10 Meeting Location

Duration 15 Minutes

Time Receipt unlock OK

☒ Reminder 15 Minutes ☐ Inactive ☐ Closed Follow Up

OK Cancel

beas International Rollouts

- Reasons for SAP® Business One / be.as

■ Strategic rollout

- In small and mid-sized subsidiaries world-wide

■ New subsidiary

- New foundation
- Acquisition
- Spin-off

■ Change management

- Rightsizing

■ Integration / migration options

- Integration in R/3 / MySAP
- Subsidiary can be migrated later on to R/3 / MySAP with little effort
 - E.g. Siemens migrated a subsidiary in Romania after >4 years usage of SAP® Business One / be.as and strong growth of the subsidiary from 50 to > 350 employees
 - E.g. KSB intends to migrate in 2009 KSB Shanghai Pumps with currently more than 100 active SAP® Business One / be.as users and > 600 employees after >4 years usage and strong growth

beas International Rollouts

- References of international rollouts (1)

Company	Industry	Headquarters	Locations	URL
KSB Group	Machinery / Apparatus	Germany	China	www.ksb.com
Stork	Machinery / Apparatus	Netherlands	Europe	www.stork.com
Bauer Group	Machinery / Apparatus	Germany	Asia	www.bauer.de
Himoinsa S.A.	Machinery / Apparatus	Spain	Asia, Europe	www.himoinsa.com
Vogel & Noot	Machinery / Apparatus	Austria	Europe	www.vogel-noot.info
Norbert Industries	Machinery / Apparatus	USA	Europe	www.norbertind.com
Huber + Suhner	Metal / Plastics Processing	Switzerland	Europe, Asia	www.hubersuhner.com
MSA International	Metal / Plastics Processing	USA	Latam, Asia	www.msanet.com
Siemens	Metal / Plastics Processing	Germany	Europe	www.siemens.com
Lapp Group	Metal / Plastics Processing	Germany	Europe / Asia	www.lappgroup.com
Mennekes	Metal / Plastics Processing	Germany	Asia, Europe	www.mennekes.de

beas International Rollouts

- References of international rollouts (2)

Company	Industry	Headquarters	Locations	URL
Lord Corporation	Chemical Engineering	USA	Europe, Asia	www.lord.com
Kester	Chemical Engineering	USA	Europe	www.kester.com
JRS	Chemical Engineering	Germany	USA, Europe	www.jrs.de
Alcan Packaging Div.	Packaging	Canada	Asia, Europe	www.alcan.com
OSI Group	Food	USA	Latam	www.osigroup.com

be.as Contact

– Your Contact Address

Contact

beas group AG

Willi Jost

Bodmerstrasse 9

CH-8027 Zürich

fon: +41 (0)43 344 38 34

fax: +41 (0)43 344 38 01

mail: wj@beasgroup.ch

url: www.beasgroup.ch

